



# Mediwin

COMBO &  
SUPPOSITORIES SECTION



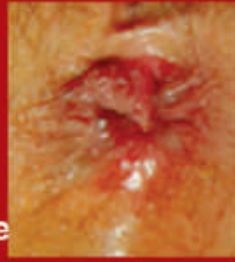
An effective therapy in .....

**Grade I**



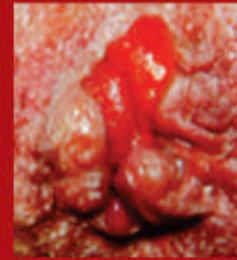
The haemorrhoids do not prolapse

**Grade II**

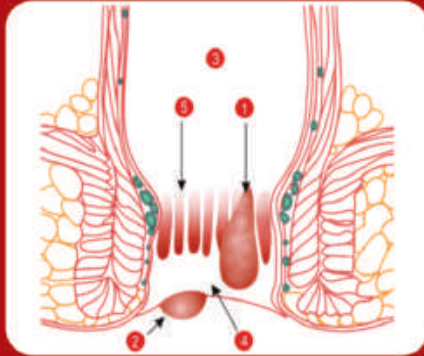


The haemorrhoids prolapse upon defecation but spontaneously reduce.

**Grade III**



The haemorrhoids prolapse upon defecation, but must be manually reduced.



1. Internal haemorrhoids

2. External haemorrhoids

3. Rectum

4. Anal canal

5. Normal cushions of tissue

## Haemorrhoidal Suppositories

# ANONORM



*The convenient way to treat piles*

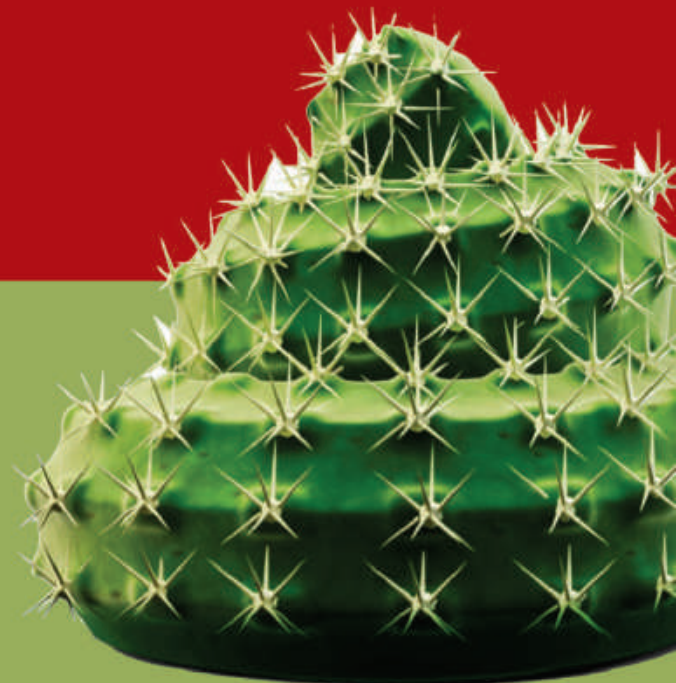
Each suppository contains : Hydrocortisone Acetate 0.25% w/w, Lidocaine 3.00% w/w, Zinc Oxide 5.00%w.w, Allantoin 0.50%w/w & Soluble Suppository base q.s..

**EASIER TO USE**

**MORE EFFECTIVE**

**ACCURACY OF DOSAGE**

**NO WASTAGE**



**ANONORM<sup>®</sup>**

The convenient way to treat piles

2 Strips of 5 suppositories

Rx

Haemorrhoidal Suppositories  
**ANONORM<sup>®</sup>**

Correct, safer and easier way to treat internal piles

- Designed to deliver drug at the site for quick relief
- Reduces swelling, soothes and protects
- Relieves pain, discomfort and shrinks piles

- Convenient strip pack - easy to open
- In case suppository appears to have softened while in the pack, then keep the pack in refrigerator for 15 minutes before using it.



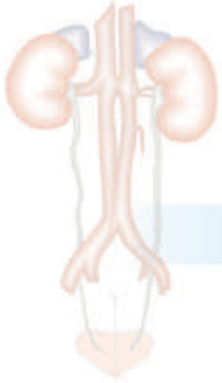
Easy to use -  
see directions on  
back of carton



# Calculiger

SYRUP & CAPSULES

.... Crushes Stone naturally



Pashanbhed, Swet Parpali and Yavakshar in higher concentration

For More Effective & Safe Management

Relieve  
Discomfort of

# UTI



Renal Stone

Non-specific U.T.I's

Dysuria

Oedema & Generalized Anasarca

Burning Micturition

Crystalluria

Poor renal functions

Dosage : 2 capsules empty stomach  
morning  
:10 ml. (Syrup) B.I.D.  
afternoon & evening

Separate packs of Syrup & Capsules also available

**Calculiger** .... Crushes Stone naturally



**10** DAYS  
**WONDER** THERAPY

Combat the bacteria responsible  
for **leukorrhea & PID.....**

# Leukonorm

Herbal Leucorrhoea Syrup & Capsules

**Tackle Femal Disease  
Quickly and Smoothy**

**With combination of  
Ashok, Lodhra, Shatawari,  
Ashwagandha  
and other great herbs**



- White discharge is a very common symptoms of various disease and pathogens
- Control disease gently with Leukonorm.
- Which is a herbal combination of various important herbs.
- Which control disease very nicely.
- Leukonorm very effective in Leucorrhoea, Amenorrhoea,
- Etiology, body weakness and other female diseases.





**S A F E**  
**EFFECTIVE**  
**&**  
**NATURAL**

# Naturacid

An Ayurvedic formula

## COMBO

**A way to get freedom from the dependence on Ppi's**

**Useful in IBS**

**Eliminate gastric problem from root cause**

**Non habit forming**



**IBS**      **Gastric Trouble**      **Indigestion**      **Gripping**  
**Flatulance**      **Heart Burn**      **Peptic Ulcer**

**Dosage : 10 ml. Syrup TDS after meals  
& Capsules BD for 30 days**

**also available....**

**Naturacid** 200 ml.  
**Suspension**

**the answer time & again**







# A Unique Herbal Immune Booster

Recover  
the Platelet  
Loss

# Refill



Each hard gelatin capsule contains :  
Tinospora Cordifolia 125 mg. +  
Carica Papaya 370 mg.

**Capsule**

Each 10 ml. contains : Ocimum Sanctum 700mg. +  
Piper Nigrum 50mg. + Swertia Chirayta 300mg.  
Tinospora Cordifolia 1200mg. + Carica Papaya 1500mg.  
+ Melia Azedarach 150mg.

**Syrup**

**Giloy :** Giloy (Scientific name-Tinospora cordifolia) has also been proved to be useful in treatment of dengue fever. The juice of Giloy (Guduchi) has proven efficacy in treatment of patients of dengue, Consumption of giloy juice increases platelets count and brings down fever.

Australian Journal of Medical Herbalism, Vol. 13, No. 2, 2001: 49-54, 56-7

**Papaya :** It has been found in several researches that papaya leaf is quite effective in treatment of dengue/ Swine flue / Viral Influenza. Dr. Sanath Hettige, who conducted the research on 70 dengue fever patients, said papaya leaf juice helps increase white blood cells and platelets, normalizes clotting, and repairs the liver

Journal of Medicinal Plants Studies, Vol. 1 No. 1 2013, Page-9

Also Available  
Attractive  
Blister Pack



## Tinospora Cordifolia Is Used For :

- ★ Increase Blood Platelet in Dengue fever
- ★ Help to recover fast in swineflu
- ★ Useful in all Viral Fevers
- ★ Allergic Rhinitis
- ★ Boost The Immune System.

**DOSAGE :** 2 Capsules Stat if Platelet count is higher than 50000  
2 Capsules BD if platelet count is lower than 50000

**DOSAGE :** Syrup 10 ml BD if Platelet count is higher than 50000  
Syrup 10 ml QID if platelet count is lower than 50000

**Refill**  
the King of Immune Booster





Recover  
the Platelet  
Loss

**Refill**  
COMBO

Recover  
the Platelet  
Loss

**Refill**

Recover  
the Platelet  
Loss

**Refill**

*Thankyou Doctor*



**Mediwin  
Laboratories**

*Committed to Better Human*

**HEALTH**

*through innovation & quality*

